

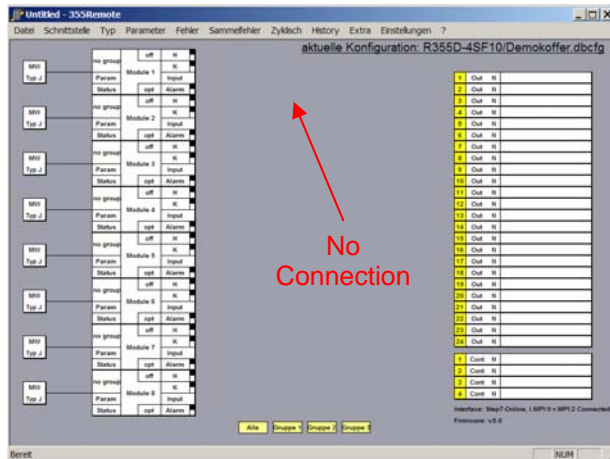
Installation Instructions for Virtual Continuous Outputs

Requirements for VIPA FM 355/R355 controllers > 4 continuous outputs per device

As of firmware version 5.0, channels to which **no** outputs are connected function as continuous-action controllers (no connection to the I/Os).

The module's function is thus not restricted to 4 continuous outputs.

R355 => activation via parameter index for the channel data blocks:



Control is accomplished with positive and negative manipulated values to assure general usability. For this reason, the "minimum manipulating factor" must be set to zero for pure heat regulation, and for pure cooling regulation the "maximum manipulating factor" must be set to zero.

R355 Instructions

Operating instructions, page 45, channel blocks

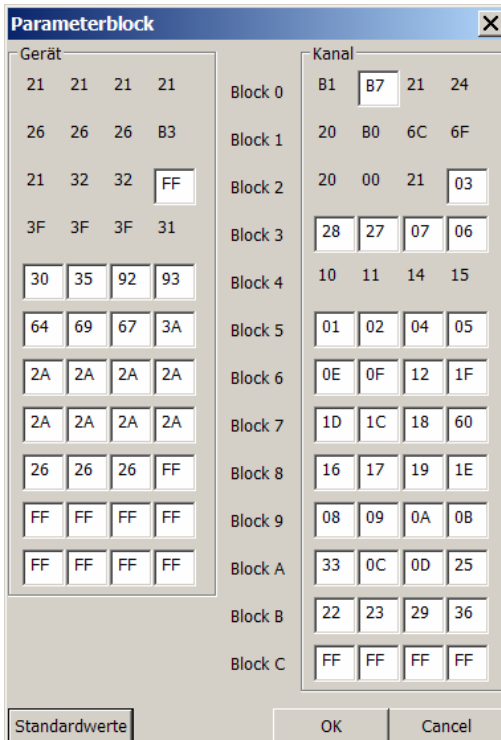
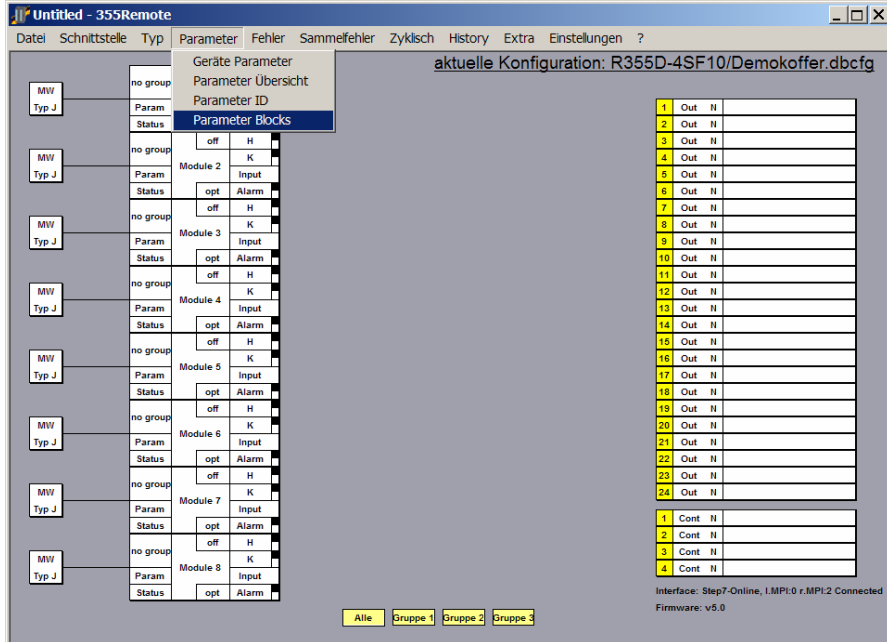
Block X0, parameter index B7 (current manipulating factor) is no longer fixed, and must be replaced with parameter index B6 (continuous manipulating factor) for this function. The entry is changed from percent to per thousand.

Block	Wort	fix	PI	Wert
1X...8X				nur lesen
X0	0	X	B1	Aktueller Istwert
	1	X	B7	Aktueller Stellgrad
	2	X	21	Fehlerstatus (Ist)
	3	X	24	Reglerstatus
X1	4	X	20	Reglerfunktion (Ist)
	5	X	B0	Aktueller Sollwert
	6	Y	B6	Heizstrom-Istwert

Implementation of Parameter Index B6

Start the 355Remote-Tool as usual.

Open the “Parameter Blocks” directory with the help of the “Parameters” menu in the menu bar.



Change the parameter index from B7 to B6 and acknowledge by clicking OK.

The continuous value can now be retrieved as a per thousand value from the respective memory location, and read out to the required analog outputs as an analog value via the PLC.

– End –